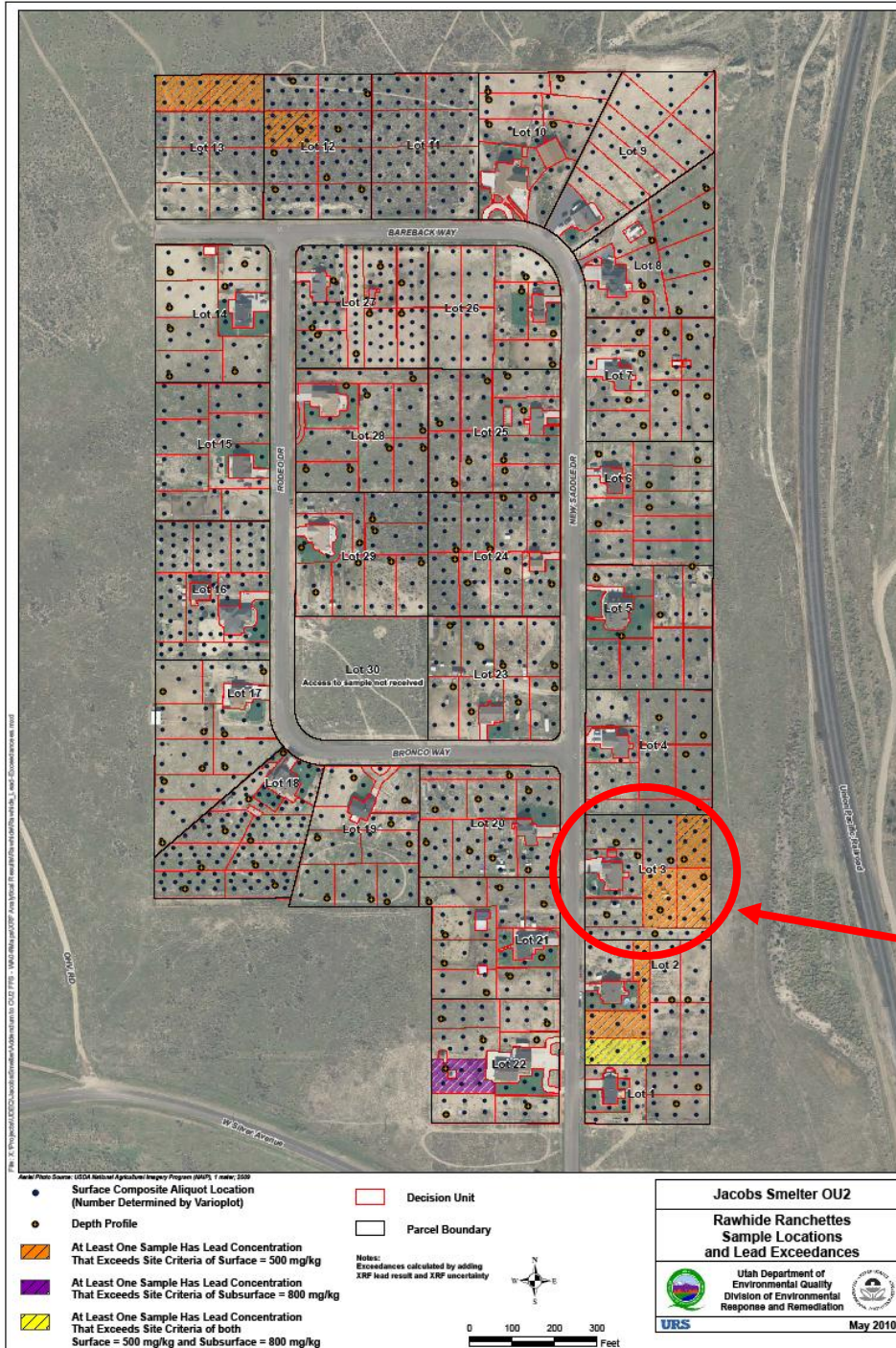


# Rawhide Ranchettes Decision Units Above Residential Action Levels Based on Fall 2009 Sampling



Lead Avg Concentration

Surface Soil



Field in-situ= 169 ppm

Lab ex-situ/IS sample= 171 ppm

Lead Avg  
Concentration

Surface Soil

Field in-situ= 396 ppm

Lab ex-situ/IS sample= 361 ppm



Lead Avg  
Concentration

Surface Soil

Field in-situ= 559 ppm

Lab ex-situ/IS sample= 733 ppm



Lead Avg Concentration

Surface Soil



Field in-situ= 40 ppm

Lab ex-situ/IS sample= 40 ppm

Lead Avg  
Concentration

Surface Soil

Field in-situ= 693 ppm

Lab ex-situ/IS sample= 860 ppm



Lead Avg  
Concentration

Surface Soil

Field in-situ= 1298 ppm

Lab ex-situ/IS sample= 1367 ppm



Lead Avg Concentration

Surface Soil



Field in-situ= 204 ppm

Lab ex-situ/IS sample= 226 ppm

Lead Avg Concentration Surface Soil

Field in-situ= 219 ppm

Lab ex-situ/IS sample= 239 ppm

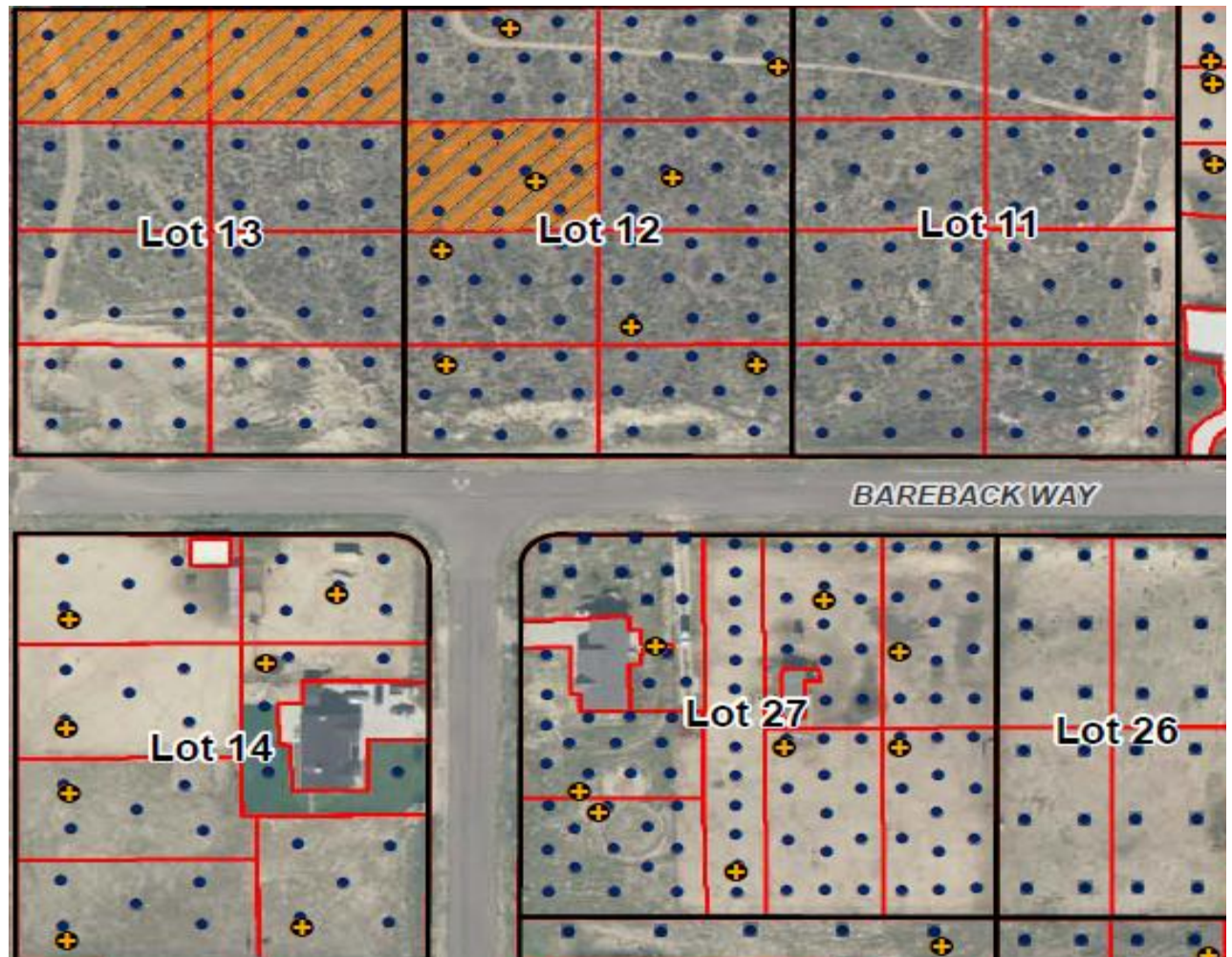




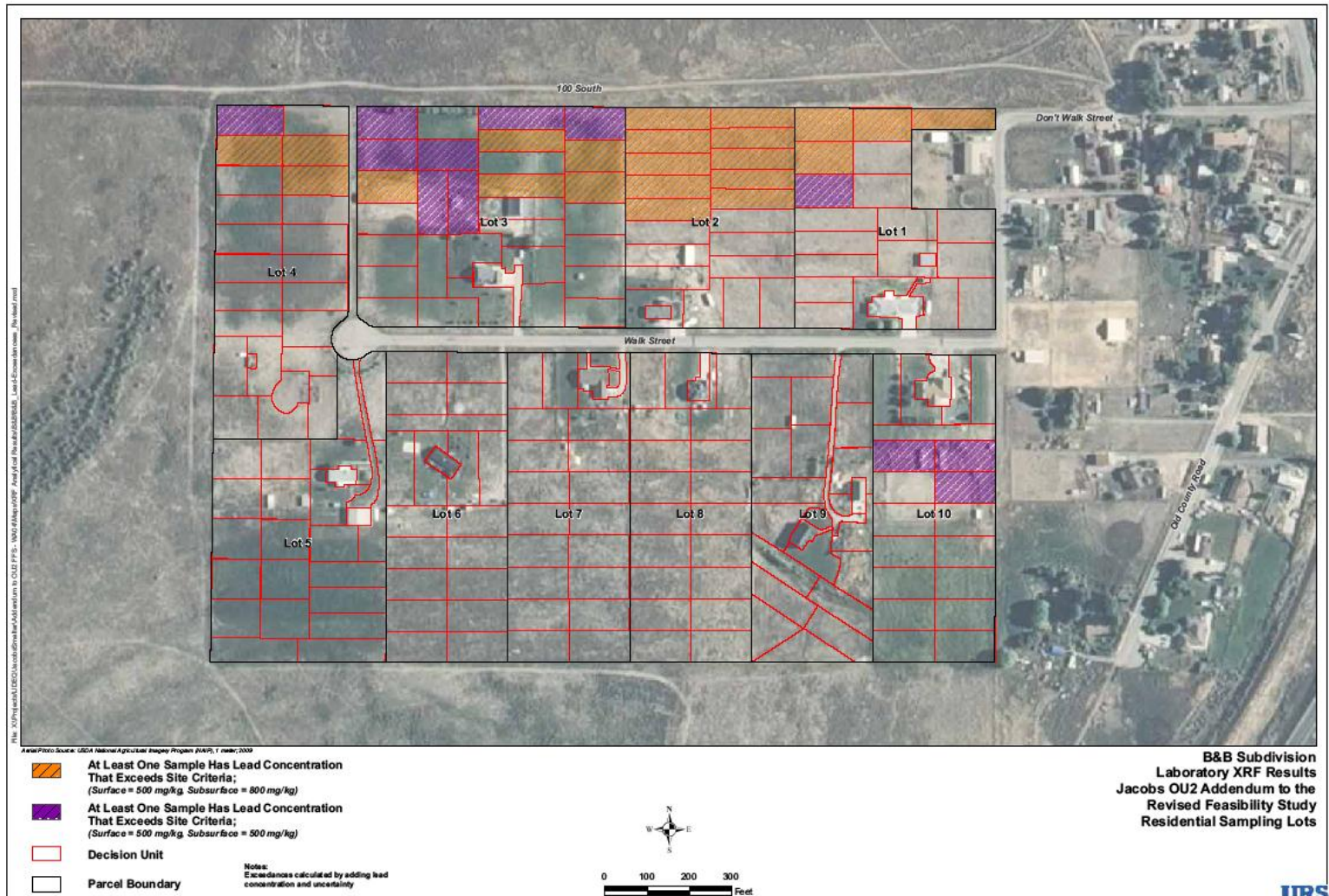
# Answers in the Field

## *Questions addressed by dynamic work strategy:*

- How many Increments?
- What can we expect the mean of the ICS to be? (In-situ surface results)
- Where should be take a depth sample (highest in-situ surface reading).
- Anything unusual? shoot with the XRF



## Decision Units Above Residential Action Levels Based on Fall 2009 Sampling





# Waterman Smelter Area – Lead Concentrations Based on Historical and 2009 Data

