

ROST Fluorescence Response Data

Site: Village of Hartford

Client: Clayton Group Services

Date/Time: 1/31/2004 @ 9:25:28 AM

ROST Unit: 1

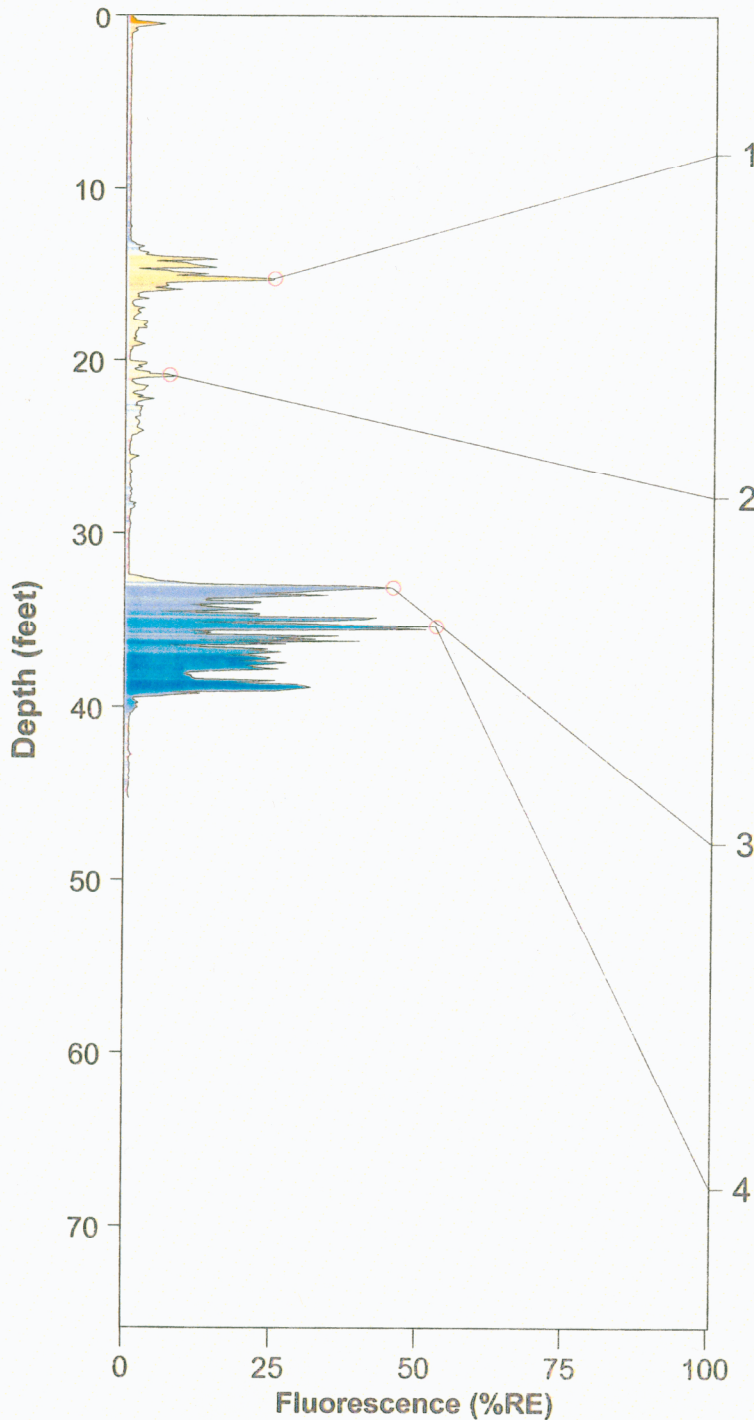
Operator: ddeleon

Fugro Job #: 0303-0921

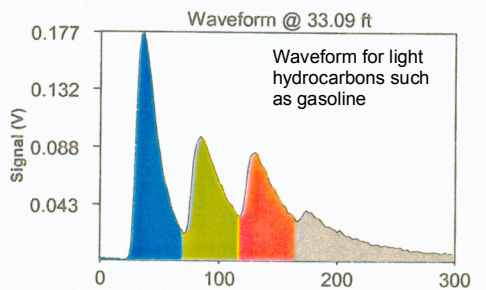
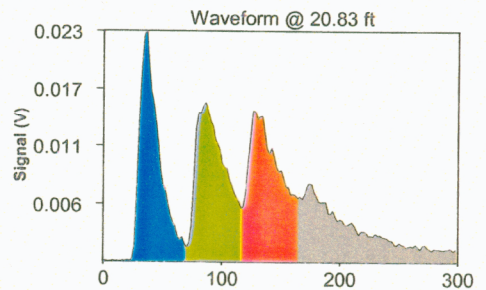
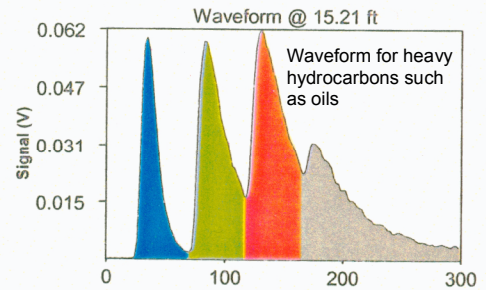
Max fluorescence: 52.41% @ 35.35 ft

Final depth BGS: 45.31 ft

HROST-52



Source: Clayton 2004b.

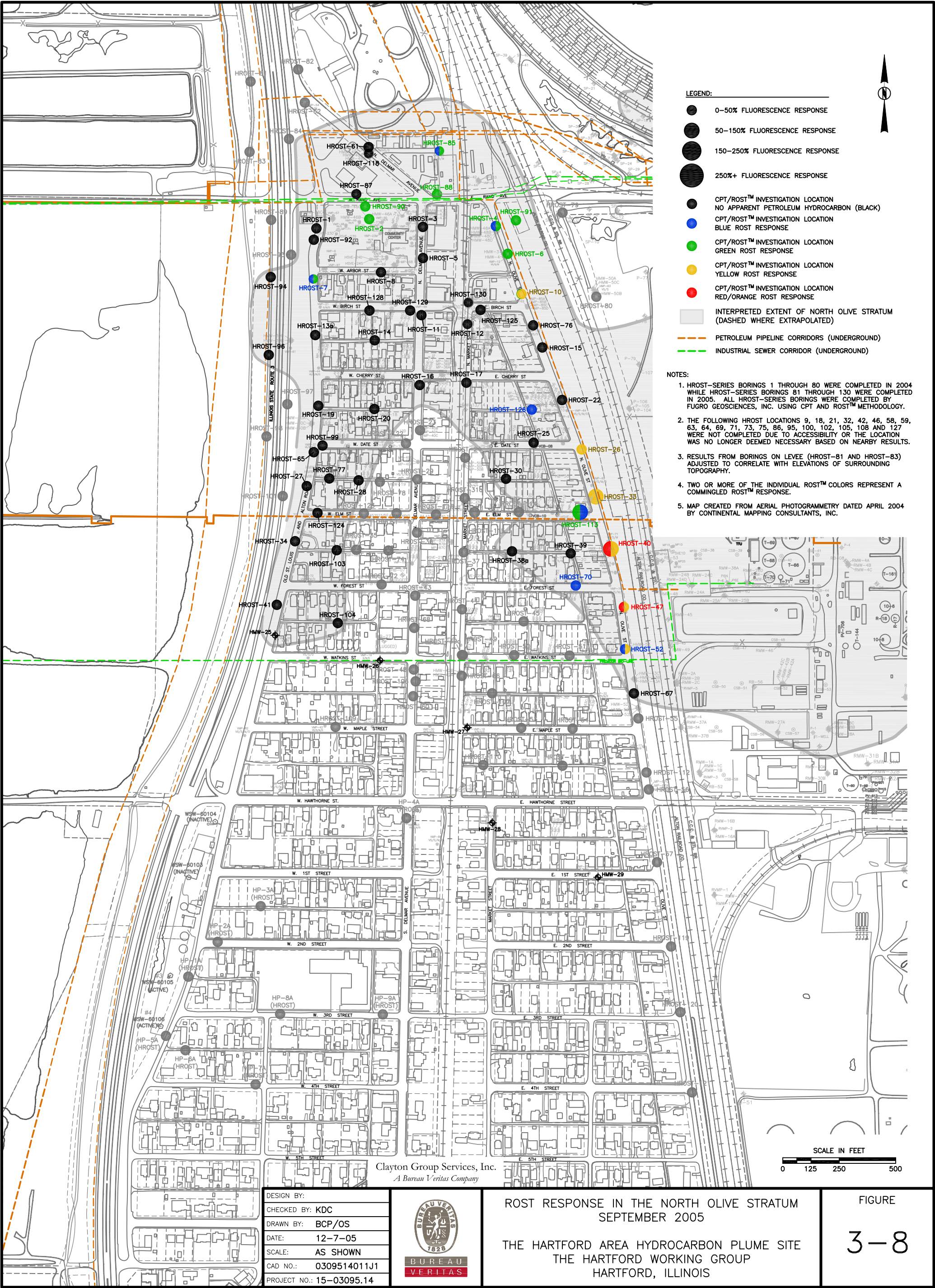


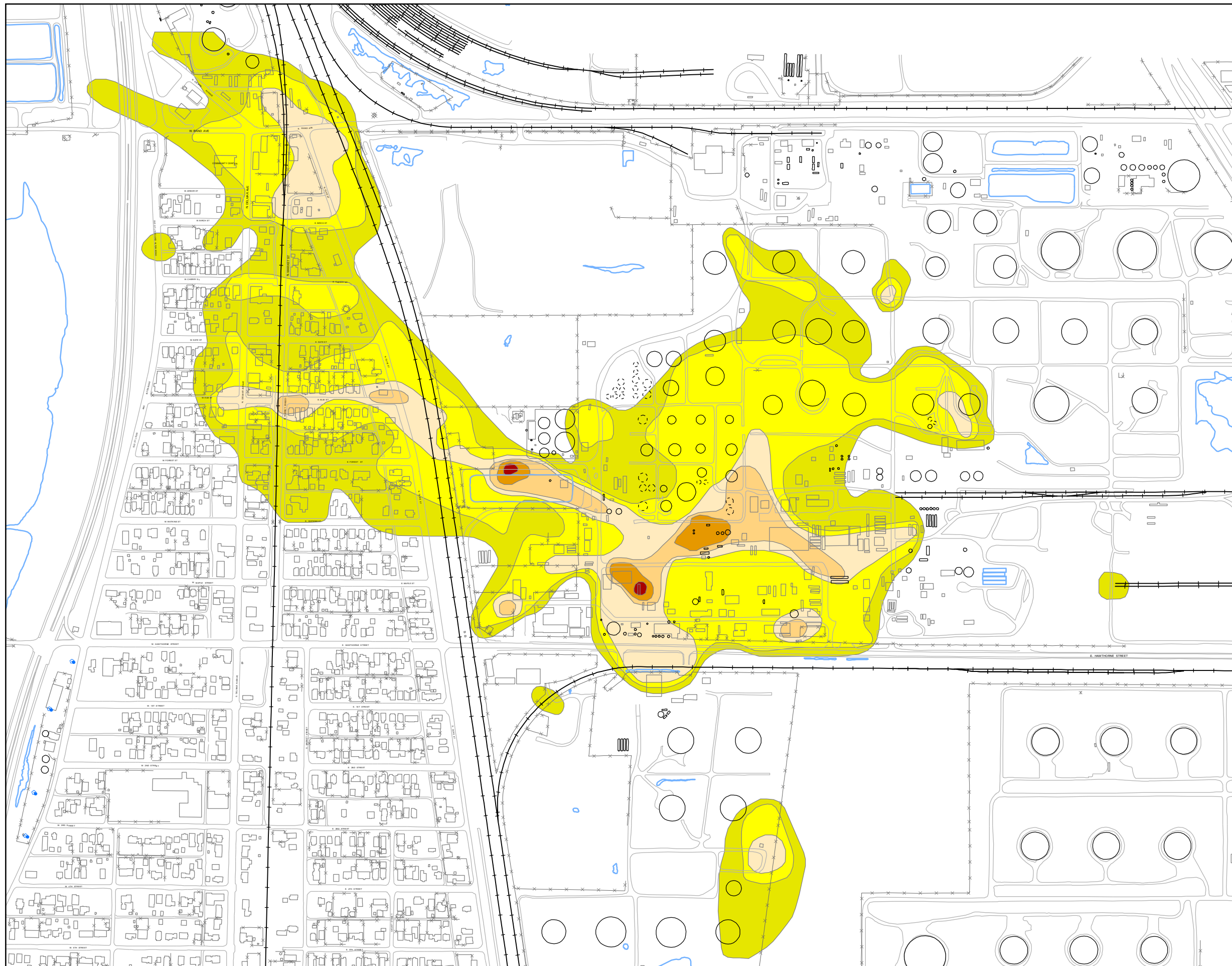
HARTFORD AREA
HYDROCARBON PLUME SITE
HARTFORD, ILLINOIS

FIGURE 4
EXAMPLE ROST
FLUORESCENCE
RESPONSE DATA



TETRA TECH EM INC.



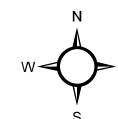


Legend

- 5 to <10 Feet of total ROST Response
- 10 to <20 Feet of total ROST Response
- 20 to <30 Feet of total ROST Response
- 30 to <40 Feet of total ROST Response
- 40 to <50 Feet of total ROST Response
- 50 to <60 Feet of total ROST Response

- < Less Than
- Road
- +— Railroad
- - - Fence
- Pond
- Aboveground Storage Tank (dashed where removed)
- Building

Sources: Clayton Group Services, Inc. 2006a.,
Clayton Group Services, Inc. 2004b.,
Clayton Group Services, Inc. 2006c.



0 300 600
Scale in Feet

HARTFORD AREA
HYDROCARBON PLUME SITE
HARTFORD, ILLINOIS

FIGURE 9
TOTAL PETROLEUM HYDROCARBON
ROST RESPONSE THICKNESS

