

FIGURE 6

**LOGIC DIAGRAM 1:
ARSENIC IN FLY ASH INVESTIGATION
COS COB SITE**

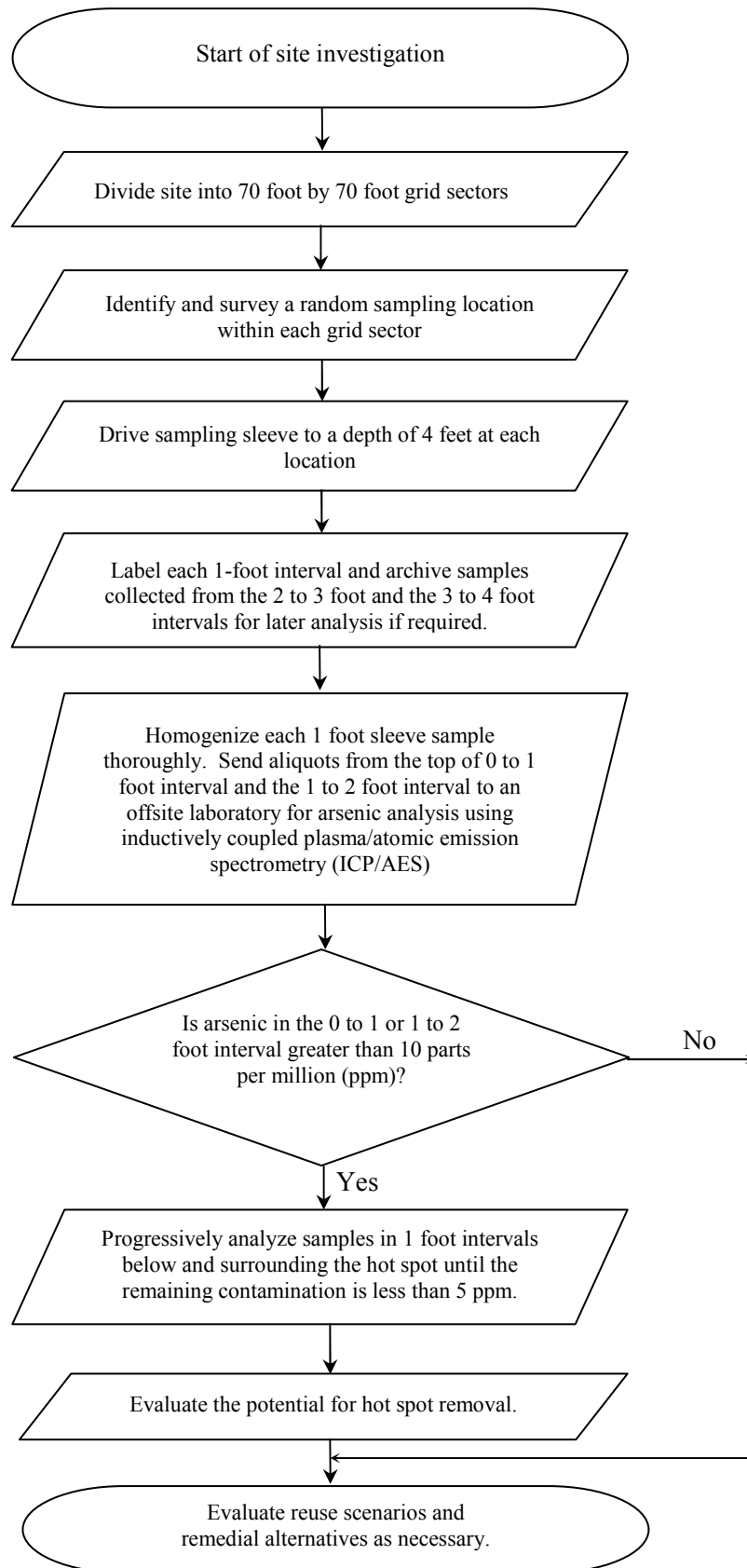
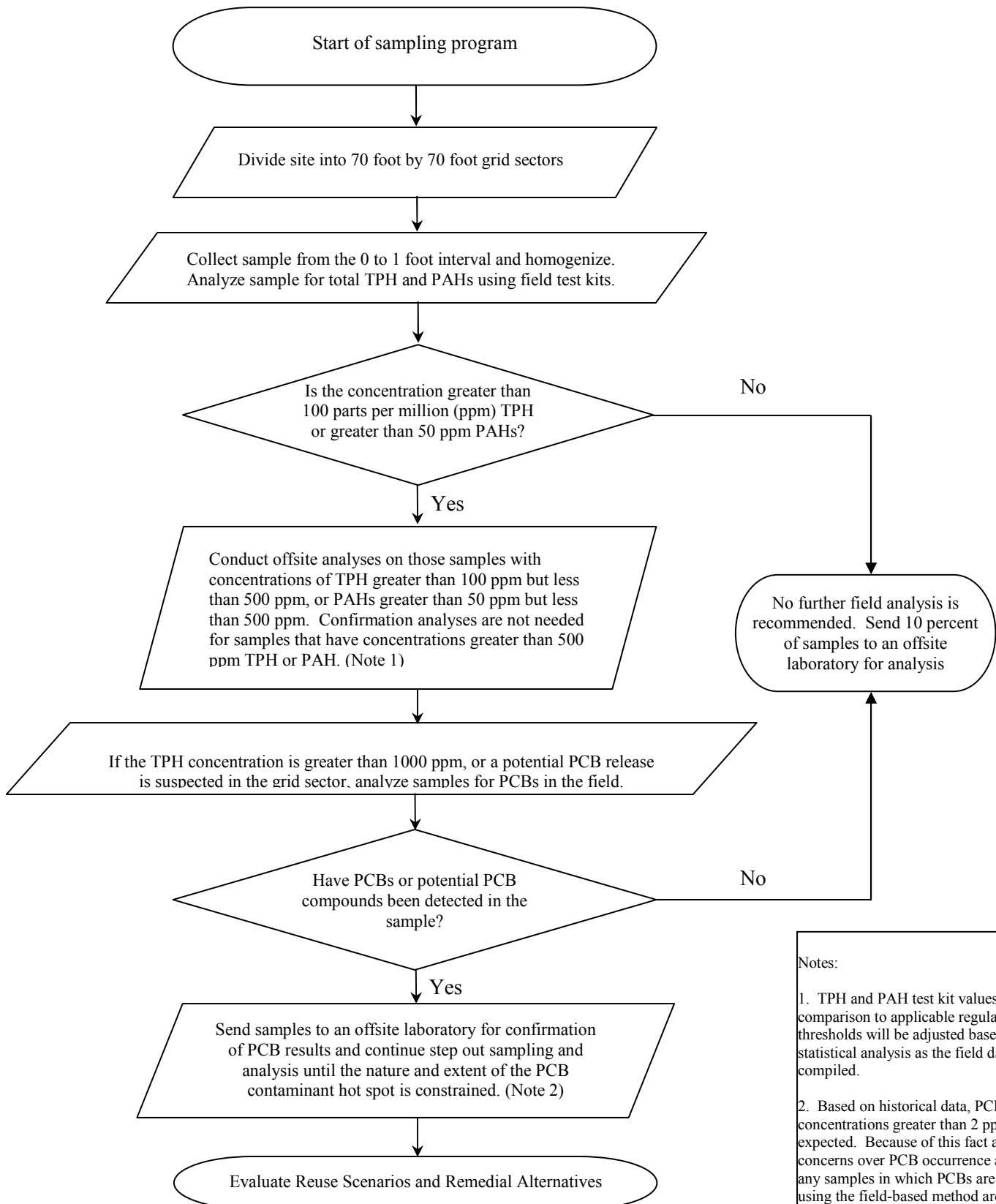


FIGURE 7

**LOGIC DIAGRAM 2:
TPH, PAH, AND PCB INVESTIGATION
COS COB SITE**



Notes:

1. TPH and PAH test kit values for comparison to applicable regulatory thresholds will be adjusted based on statistical analysis as the field data set is compiled.

2. Based on historical data, PCB concentrations greater than 2 ppm are not expected. Because of this fact and the concerns over PCB occurrence at the site, any samples in which PCBs are detected using the field-based method are recommended for further off-site laboratory analysis.